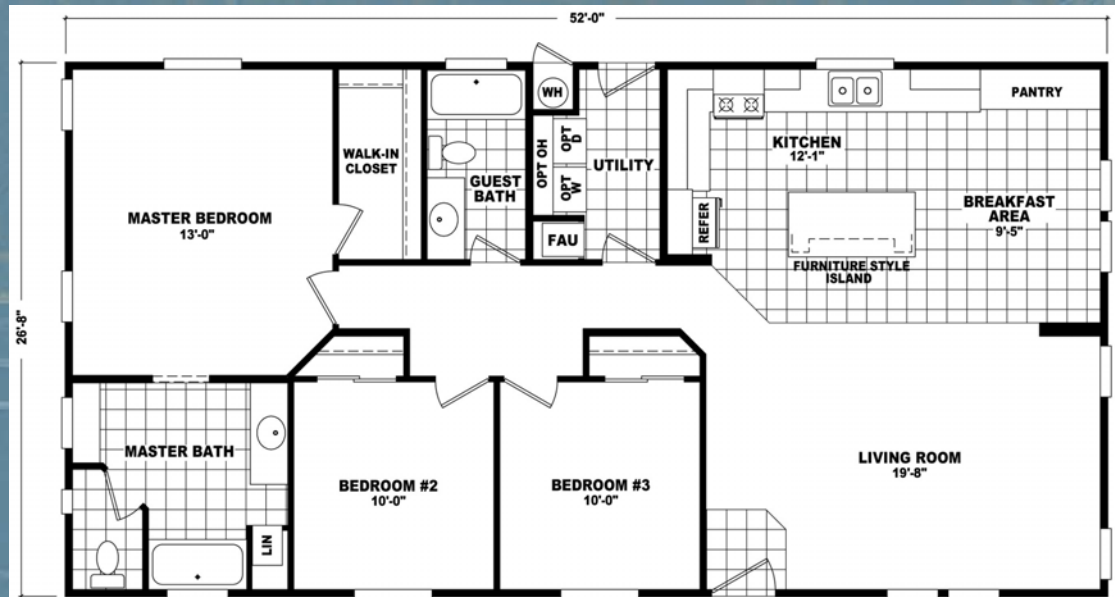
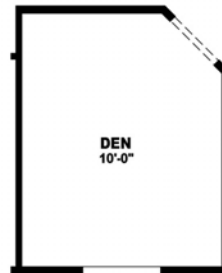


# Durango Value Series



**OPT MASTER BATH**



**OPT DEN**

**MODEL: DVS-2852B**  
APPROXIMATELY 1386 SQ. FT.  
3 BEDROOM, 2 BATH

QUALITY YOU NEED, AT A PRICE YOU'LL LOVE

# STANDARD FEATURES

## INTERIOR FEATURES

- \* Dramatic Cathedral Ceilings Throughout
- \* Tape and Textured Drywall Throughout
- \* White Interior Passage Doors with Painted Jambs and Casings
- \* Beautiful Carpeting with ½" Pad
- \* Congoleum Linoleum in Kitchen, Bonus Room, Baths and Entryway (Per Plan)
- \* Silent Wall Switches
- \* Upgraded Passage Door Hardware & Heavy Duty Hinges
- \* Quality Designer Light Fixtures
- \* Wired and Braced for Ceiling Fans in Living Room & Master Bedroom
- \* White wood window cornices with 2" blinds
- \* Hollow Core Wardrobe Doors

## EXTERIOR FEATURES

- \* Distinctive Residential Elevations
- \* Vertical Grooved Painted Siding
- \* Fiberglass Shingled Roof
- \* 6" Sidewall Roof Eaves and 12" End wall Overhangs on doublewides. 12" front overhang on singlewides
- \* Porch Lights at All Exterior Doors
- \* Residential In swing Front and Rear Doors with Deadbolt
- \* Oversized Windows with Tinted Glass

## KITCHEN AND BONUS ROOM FEATURES

- \* Custom Cabinets with MDF Doors, Maple Finished Overhead Cabinet Interiors, and Drawers Over Doors in Kitchen Base Cabinets
- \* Nationally Serviced General Electric Appliances
- \* 30" Free Standing Gas Range
- \* Double Door Frost-Free Refrigerator
- \* High Pressure Laminate Kitchen Countertops with Ceramic Tile Backsplash
- \* Stainless Steel Sink
- \* Wired and Plumbed for Washer & Dryer
- \* Utility Overhead Shelf over Washer & Dryer Area
- \* Single Lever Faucet with Spray

## BATH FEATURES

- \* Fiberglass Tub/Showers
- \* Single lever or dual handle lavatory faucets

- \* Laminate countertops with ceramic tile backsplash
- \* Towel Bars and Tissue Holders
- \* Vanity Mirrors with Light Bars
- \* Privacy Door Locks and Exhaust Fans
- \* Recessed Medicine Cabinets

## CONSTRUCTION

- \* 2 x 4 Exterior Walls on 16" Centers
- \* 90" Sidewall Height
- \* 2 x 6 Floor Joists on 16" Centers
- \* 2x Interior Walls on 16" Centers
- \* Elevated Nominal 4/12 Roof Pitch with 30 lb. Construction
- \* Solid Steel I-Beam Frame Construction
- \* Easy Access Undercarriage Drain System
- \* Climate Zone II Insulation with Floors R-22, Walls R-11, and Roof R-25 Minimum
- \* Ventilare III Air Exchange System
- \* 100 Amp Electrical Service (Per National Electric Code) with Copper Wiring
- \* 30 Gallon Electric Water Heater
- \* Easy Access Interior Electrical Panel Box with Separate Appliance Circuits and Breaker Protection on All Circuits
- \* Shut Off Valves on all Water Fixtures
- \* Forced Air Gas Furnace with Ducts Inside Fully Sealed Basement Cavity

## POPULAR OPTIONS

- \* Floor Plans Customized to Meet Your Individual Needs
- \* Flash Master Bathroom With Corner Tub and Separate Shower Stall
- \* Detachable Hitches
- \* Bay Window Treatments
- \* Upgraded Exterior Elevations and Roof Dormers
- \* Vinyl Dual Glazed Windows
- \* Upgraded Climate Zone III Insulation
- \* 2 x 6 Exterior Walls with R-19 Insulation
- \* Upgraded Appliances & Dishwashers
- \* Customized Fireplaces and Hearths
- \* Upgraded Carpets
- \* Increased Roof Load Construction
- \* Skylights and Starlight Dormers
- \* Rounded Drywall Corners



MANUFACTURED BY:

**CAVCO DURANGO**  
**2502 W DURANGO ST**  
**PHOENIX, ARIZONA 85009**  
**PHONE: 602-278-3554**  
**FAX: 602-484-7028**  
**CAVCOHOMES.COM/DURANGO**

IMPORTANT: Because we continuously update and modify Cavco products it is important for you to know that our brochures and literature are for illustrative purposes only. All information contained herein may vary from the actual home we build. Dimensions are nominal and length and width measurements are from exterior wall to exterior wall. The right is reserved to make changes at any time, without notice or obligation, in prices, colors, materials, specifications, features and models. Please check with your retailer for specific information about the home you select. (Add approximately four feet to determine transportable length.)

